

WORLD MULTIPLE SCLEROSIS DAY

2026

TURNING AWARENESS INTO ACTION FOR A WORLD BEYOND MS



Global Prevalence & Awareness



2.9M+
People living with MS worldwide



18-50 yrs
MS commonly begins between 18 and 50 years



3:1
Female to male ratio globally



1 in 400
US prevalence people are living with MS

US Prevalence

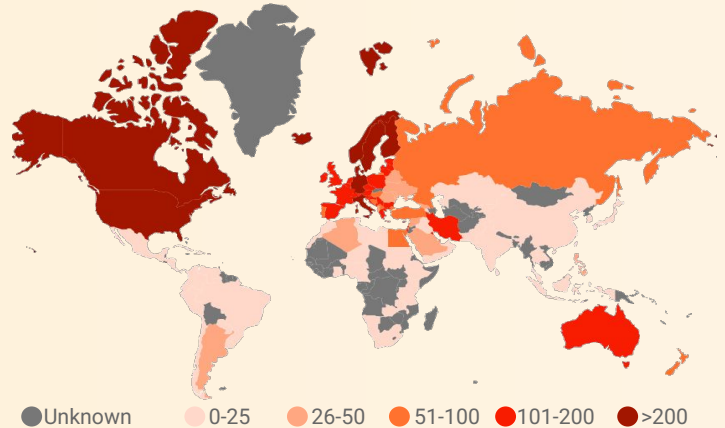


36 yrs
Average age of diagnosis



4,000
Children under the age of 18 living with MS

MS AFFECTS PEOPLE WORLDWIDE



Types of Multiple Sclerosis



CIS
Clinically Isolated Syndrome



RRMS
Relapsing-Remitting Multiple Sclerosis



PPMS
Primary Progressive Multiple Sclerosis



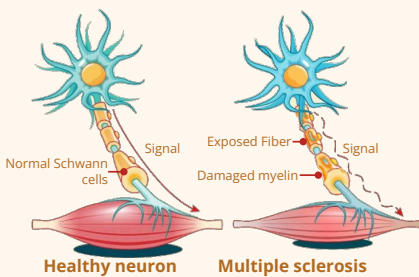
SPMS
Secondary Progressive Multiple Sclerosis

Multiple sclerosis (MS) is a chronic, autoimmune disease of the central nervous system where the immune system mistakenly attacks **myelin**, the protective sheath covering nerve fibers

Risk Factors

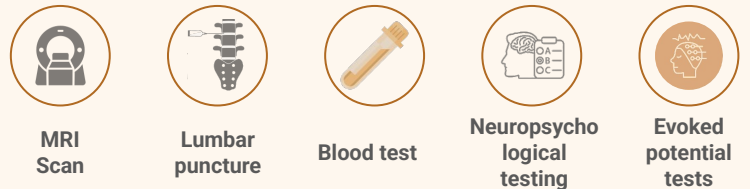


Symptoms of Multiple Sclerosis



- Fatigue
- Brain Fog
- Numbness
- Balance Issues
- Vision Problems
- Muscle Weakness
- Bladder and Bowel Dysfunction

Diagnosis



Treatment for Relapsing Forms

- | | | |
|--|---|---|
| Moderate Efficacy | Good Efficacy | High Efficacy |
| <ul style="list-style-type: none"> Interferon beta Glatiramer acetate Teriflunomide | <ul style="list-style-type: none"> Cladribine (oral) Fingolimod Dimethyl fumarate Ozanimod Siponimod | <ul style="list-style-type: none"> Ocrelizumab Ofatumumab Alemtuzumab Natalizumab |

Acute Relapse
High-Dose Corticosteroids
Plasmapheresis

Symptom Management
Muscle Relaxants
Pain Medication

Treat for Progressive Forms: PPMS, Non-active SPMS DMTs



PPMS
Only approved DMT - Ocrelizumab



naSPMS
No currently approved DMT



WORLD MULTIPLE SCLEROSIS DAY 2026

Turning awareness into action for a world beyond Multiple Sclerosis

Multiple sclerosis (MS) is a chronic, autoimmune disease of the central nervous system where the immune system mistakenly attacks myelin, the protective sheath covering nerve fibers

Global Prevalence & Awareness

2.9M+



Global Prevalence, people with Multiple sclerosis

18-50yrs



MS initially present in patients between 18 and 50 years old

3:1



Female to male ratio globally

US Prevalence

1 in 400

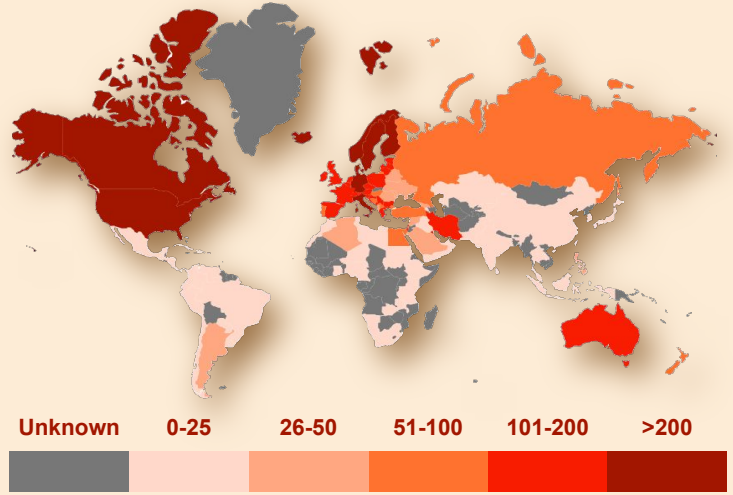
Prevalence rate in the US for people with MS

36yrs

Average age of Diagnosis

4,000

Children under the age of 18 are living with MS



Risk Factors



EBV



Smoking



Vitamin D



Childhood Obesity

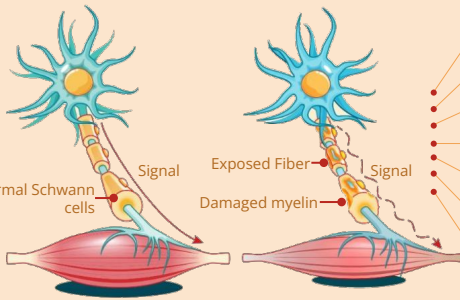


Heredity

Symptoms of MS

Healthy Neuron

Multiple sclerosis



Fatigue



Brain Fog



Numbness



Balance Issues



Vision Problems



Muscle Weakness



Bladder and Bowel Dysfunction

Diagnosis



MRI Scan



Lumbar puncture



Blood test



Neuropsychological testing



Evoked potential tests

Types of MS



CIS

A single neurologic episode lasting at least 24 hours. It is not yet MS, but a warning sign



RRMS

The most common form; defined by attacks of new or increasing neurologic symptoms followed by periods of remission



PPMS

Characterized by worsening neurologic function from the beginning, without distinct relapses or remissions



SPMS

A stage that follows RRMS where the disease transitions to a more steady worsening of disability

Treatment For Relapsing forms

Moderate Efficacy

- Interferon beta
- Glatiramer acetate
- Teriflunomide

Good Efficacy

- Cladribine (oral)
- Fingolimod
- Dimethyl fumarate
- Ozanimod
- Siponimod

High Efficacy

- Ocrelizumab
- Ofatumumab
- Alemtuzumab
- Natalizumab

Acute Relapse

High Dose Corticosteroids
Plasmapheresis

Symptom Management

Muscle Relaxants
Pain Medication

Treatment for progressive forms

DMTs



PPMS

Only Approved DMT - Ocrelizumab



naSPMS

No Currently Approved DMT