



World Lupus Day 2026

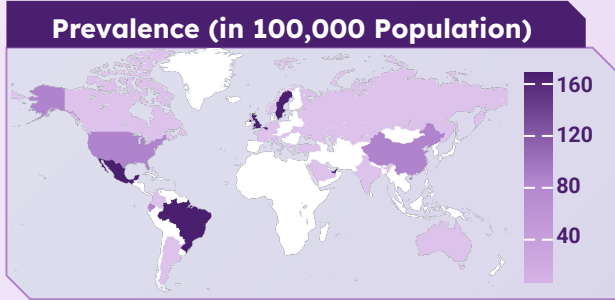
Make Lupus Visible



Definition: Lupus is a chronic autoimmune condition in which the body's immune system attacks its own tissues and organs

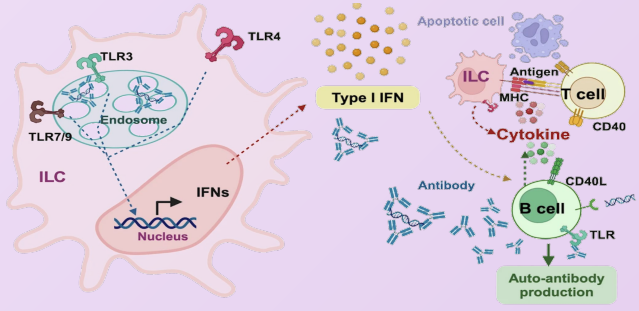
Types of Lupus

Systemic Lupus Erythematosus	Cutaneous Lupus	Drug-Induced Lupus	Neonatal Lupus
Most common type and affects multiple organs	Mainly affects the skin	Results from medications like Isoniazid, Procainamide and Hydralazine	Rare, affects infants via maternal antibodies



Pathophysiology

Genetic and environmental factors over-activate the immune system, using interferon to trigger T and B cells to produce harmful autoantibodies



Common Triggers

Air pollution	Ultraviolet (UV) light	Silica Dust	Smoking Cigarettes	Certain Medications	Toxins	Heavy Metals

Diagnosis

Complete Blood Count	Erythrocyte Sedimentation Rate	C-reactive Protein Test	Kidney and Liver Tests	Urine Tests	Antinuclear Antibody Test	Skin Biopsy

Symptoms

Arthritis	Butterfly rash	Fever	Swelling of legs	Mouth Ulcers	Sensitivity to Sun	Purple Fingers /Toes	Headaches



Socioeconomic burdens of lupus patients reaching \$50,000 through medical expenses



- 1 in 3 lupus patients suffers from multiple autoimmune diseases
- 9 out of 10 adults with lupus are women
- Most people develop the disease between the ages of 15-44

Pharmacological Treatment

Generic Name	Brand Name	Company Name
Hydroxychloroquine	Sovuna & Plaquenil	ADVANZ PHARMA
Prednisone	Rayos	HORIZON PHARMACEUTICALS
Voclosporin	Lupkynis	Aurinia
Anifrolumab-fnia	Saphnelo	AstraZeneca
Belimumab	Benlysta	Human Genome Sciences